

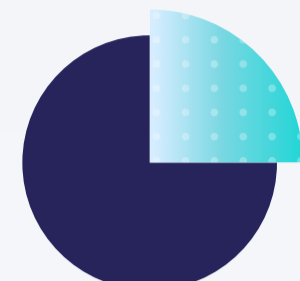
# Reopening Businesses the Safe and Secure Way

As businesses prepare to reopen, employers need to rethink how they deploy their workforce to protect vulnerable employees.



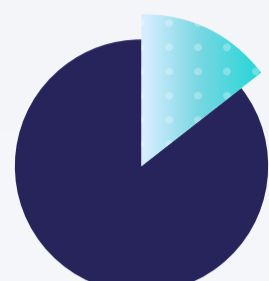
## The pandemic has taken a steep toll.

### Economic



**25%**  
projected drop in US Q2 GDP<sup>1</sup>

### Human



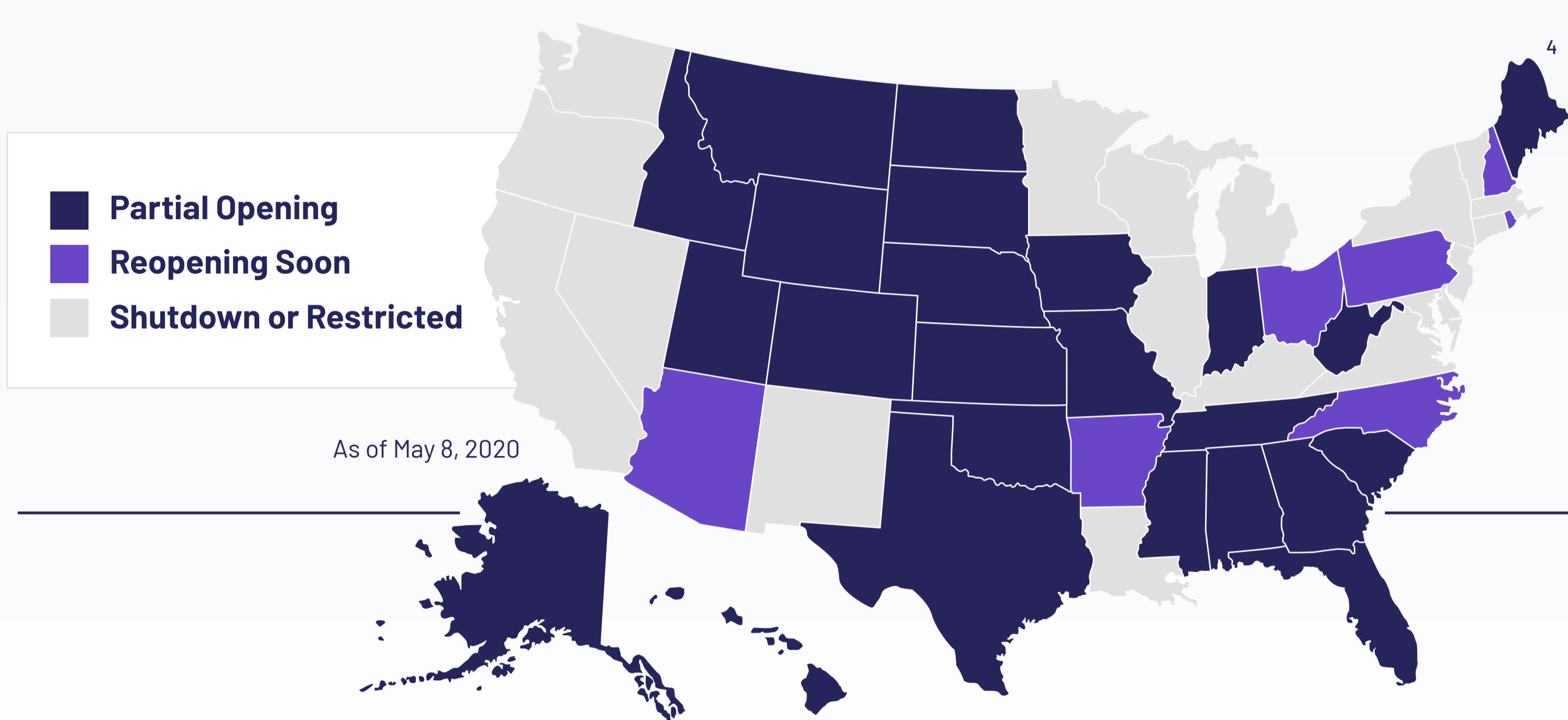
**14.7%**  
unemployment rate in April<sup>2</sup>

### Health



**38%**  
of US Adults are at risk of severe illness from Covid-19<sup>3</sup>

## Because of this, there is an urgency to restart the economy.



## Transitioning back to work safely is the new business imperative.

**Employees must be protected while health systems are particularly at risk.**

**9,000+**  
healthcare workers infected with COVID-19<sup>5</sup>

**29%**  
of patients have delayed or avoided medical care for fear of COVID-19<sup>6</sup>

**Corporate reputation needs to be protected.**

**49%**  
of consumers consider whether companies take care of their employees as one of their top five purchasing considerations<sup>7</sup>

\*\*\* Consumer backlash

**Corporate liability needs to be managed.**

- OSHA liability
- Operational shutdowns
- Employee turnover
- Damage to morale and trust

## The Jvion Employer Recovery Package can help you bring your employees back to work safely.

Contact us to learn more:  
contact@jvion.com  
470-427-2900

## Understanding who is at risk is key to a safe transition back to work.

The critical questions every employer needs to answer are:



**Who needs medical clearance**



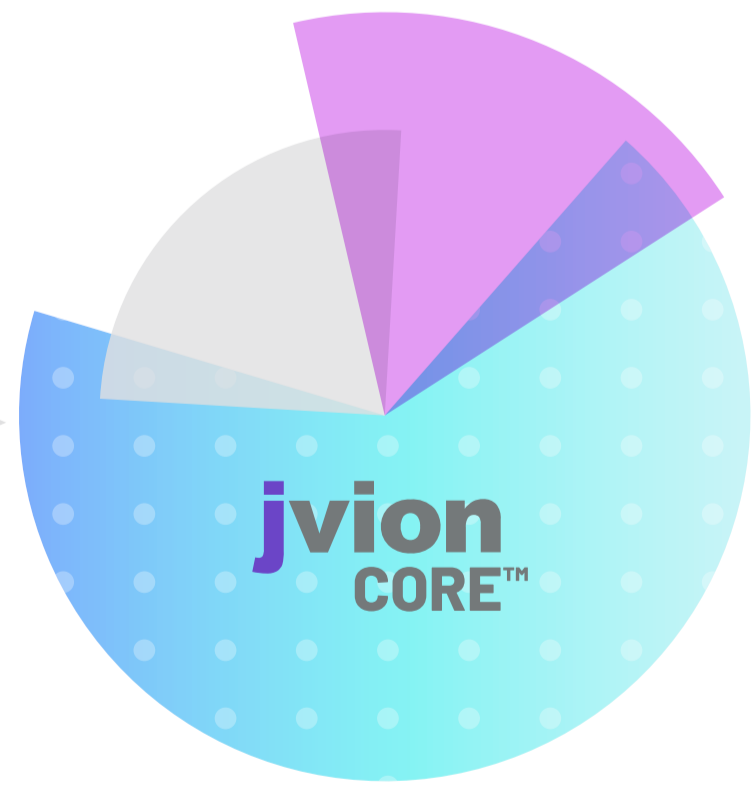
**Who is vulnerable**



**Who is cleared to work**

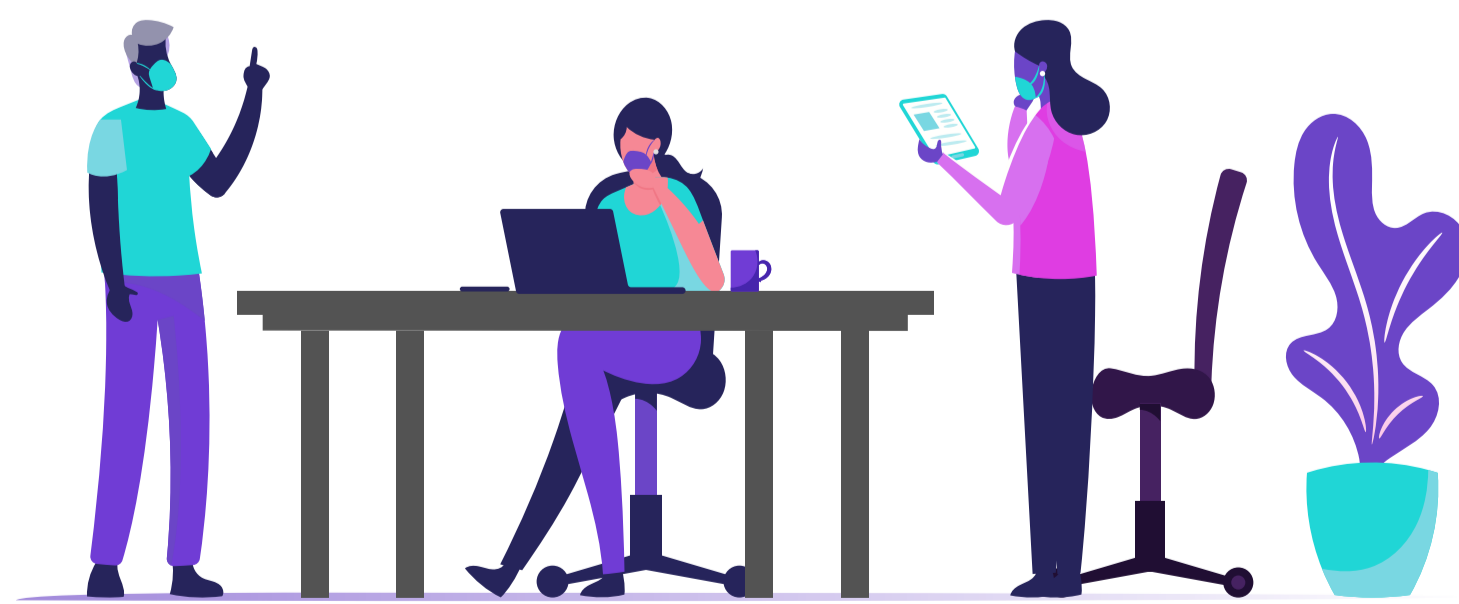


**Employer Survey**



**De-identified data from 30M lives**

**Jvion's Employer Recovery Package will give you the assessments you need to help get your employees back to work, and your business back to business.**



<sup>1</sup>JPMorgan, Weekly Market Recap, May 4, 2020  
<sup>2</sup>US Bureau of Labor Statistics, Employment Situation Summary, May 8, 2020  
<sup>3</sup>Kaiser Family Foundation, How Many Adults Are at Risk of Serious Illness If Infected with Coronavirus?, April 23, 2020  
<sup>4</sup>New York Times, See Which States Are Opening And Which Are Still Shutdown, May 7, 2020  
<sup>5</sup>CDC, Characteristics of Health Care Personnel with COVID-19, April 17, 2020  
<sup>6</sup>American College of Emergency Physicians, Public Poll: Emergency Care Concerns Amidst COVID-19, April 28, 2020  
<sup>7</sup>Morning Consult, Weathering the Storm: Brand Management in the COVID-19 Era, April 15, 2020